

# PIR-TFT-550-B Occupancy sensor

with high/low temperature limits and ON/OFF delay



- 24V AC/DC supply
- OFF-delay 0,1 to 30 min
- ON-delay 0,1 to 10 min
- Alarm output: One changing contact
- Temperature limit settings

## FUNCTION

PIR-TFT-550-B is an occupancy sensor specially designed for automatic operation control of HVAC system. It is housed in an elegant white enclosure. The lens has a detection angle of 110° in order to detect occupancy in a reliable way. With moutage bracket, MB-99, the sensor can be installed in the ceiling or on the wall. The ON-and OFF-delay can be set by means of jumpers.

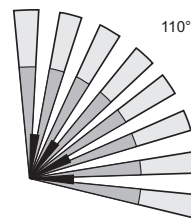
## TEMPERATURE LIMIT SETTINGS

PIR-TFT-550-B allows user to set the high/low temperature limits. When room temperature goes higher than the high-temp limit or lower than the low-temp limit, the relay will be activated automatically. **To disable the setback, remove the jumper head from pin.**

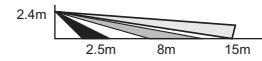
## TECHNICAL DATA

<b>Power supply:</b>	24V AC/DC ±2V AC/DC
<b>Current consumption:</b>	7mA
<b>Alarm output:</b>	1 changing contact, 24V AC/DC, 5A/NO, 3A/NC
<b>High temperature:</b>	24°/26°/28°C
<b>Low temperature:</b>	15°/17°/19°C
<b>RFI immunity:</b>	Av. 20V/m (10-1000MHz)
<b>Ambient temperature:</b>	-20°C to +50°C
<b>Moutage height:</b>	1,8-3,6m
<b>Colour:</b>	White
<b>Protection:</b>	IP20
<b>Humidity:</b>	95%rH
<b>Bracket:</b>	MB-99

## DETECTION PATTERN



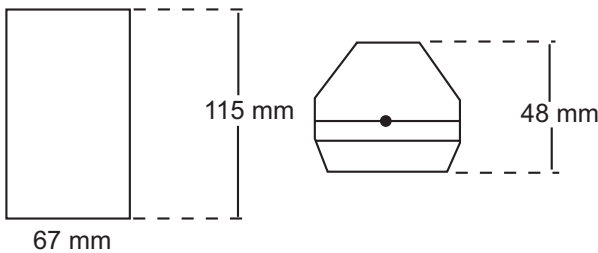
Top view



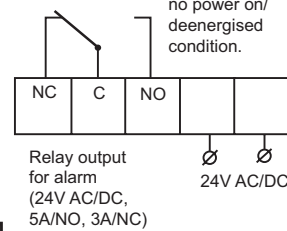
Side view

No. of detection zones:  
15 m = 8 zones  
8 m = 8 zones  
2,5 m = 4 zones  
Total = 20 zones

## DIMENSIONS



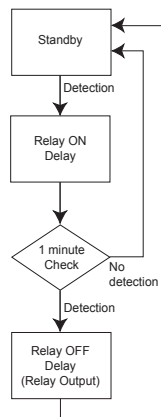
## WIRING DIAGRAM



**NOTE!**  
When room temperature goes higher or lower than the temp. limit, the relay will be activated automatically.

**Before connecting the cables, remove the circuit board from the bottom case.**

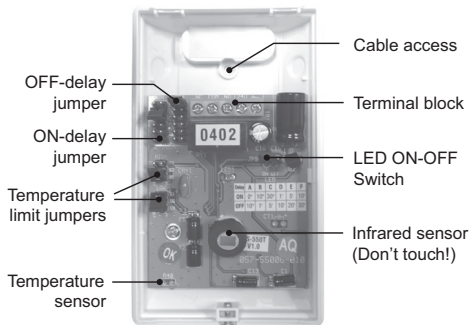
## OPERATION DIAGRAM



## ON AND OFF DELAYS

	ON	OFF
A	0 sec	10 sec
B	10 sec	1 min
C	30 sec	5 min
D	1 min	10 min
E	5 min	20 min
F	10 min	30 min

Note! Before changing the delay settings, switch always off the supply voltage.



Red LED (fixed) is lit when the detector is activated.  
Red LED (blinking) is lit if any of the jumpers for delay is taken away.

# Installation instruction Mounting Brackets for occupancy sensor PIR-TFT-550-B



## INSTALLATION HINTS

Do not install where the detector is exposed to direct sunlight or directly above strong sources of heat.

Make sure the detection area does not have obstruction (plants, large pieces of furniture, curtains etc.) which may block the pattern of coverage. PIR detector is more sensitive to the motion "across" the detection zones than "toward" the sensor.

## INSTALLATION & WALK TEST

### Installation

1. Open the front cover by loosening the locking screw. Remove the circuit board from the bottom case.
2. Punch out the adequate knockouts and mount the bottom case firmly with the screw provided at the selected position.
3. Replace the circuit board and connect the wires to the corresponding terminals.

**NC-C-NO:** Detection output

**24 V:** Power supply input, 24 V AC/DC

**AUX:** For connection with auxiliary door/window switch.

If auxiliary switch is connected, the PIR-TFT-550-B will shut off the HVAC when the associated door/window is open for more than 5 minutes.

4. Remember to seal all unused cable entries and screw holes in order to stop false alarms which can be caused by insects, etc.
5. Replace front cover, then walk test can be proceeded.
6. Note! Before changing the delay settings, switch off the supply voltage.

### Walk Test

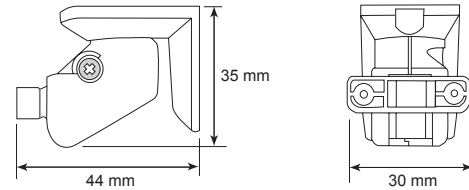
Apply the power supply to the sensor and wait for about 45 seconds for the unit to warm up. The LED will blink (long-short) during the warm up period. Ensure the jumper head connectors of ON and OFF delays are placed on "A" position (shortest delay). Walk across the detection zones (invisible) at normal speed. The LED will lit whenever the sensor detects the motion.

### NOTE!

**If any jumper head is not properly placed, the LED will blink.**

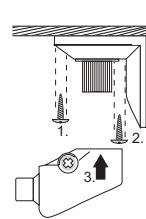
## DIMENSIONS

Mounting bracket MB-99, for ceiling- and wall mounting



## MOUNTING

### Ceiling mount



### Wall mount

