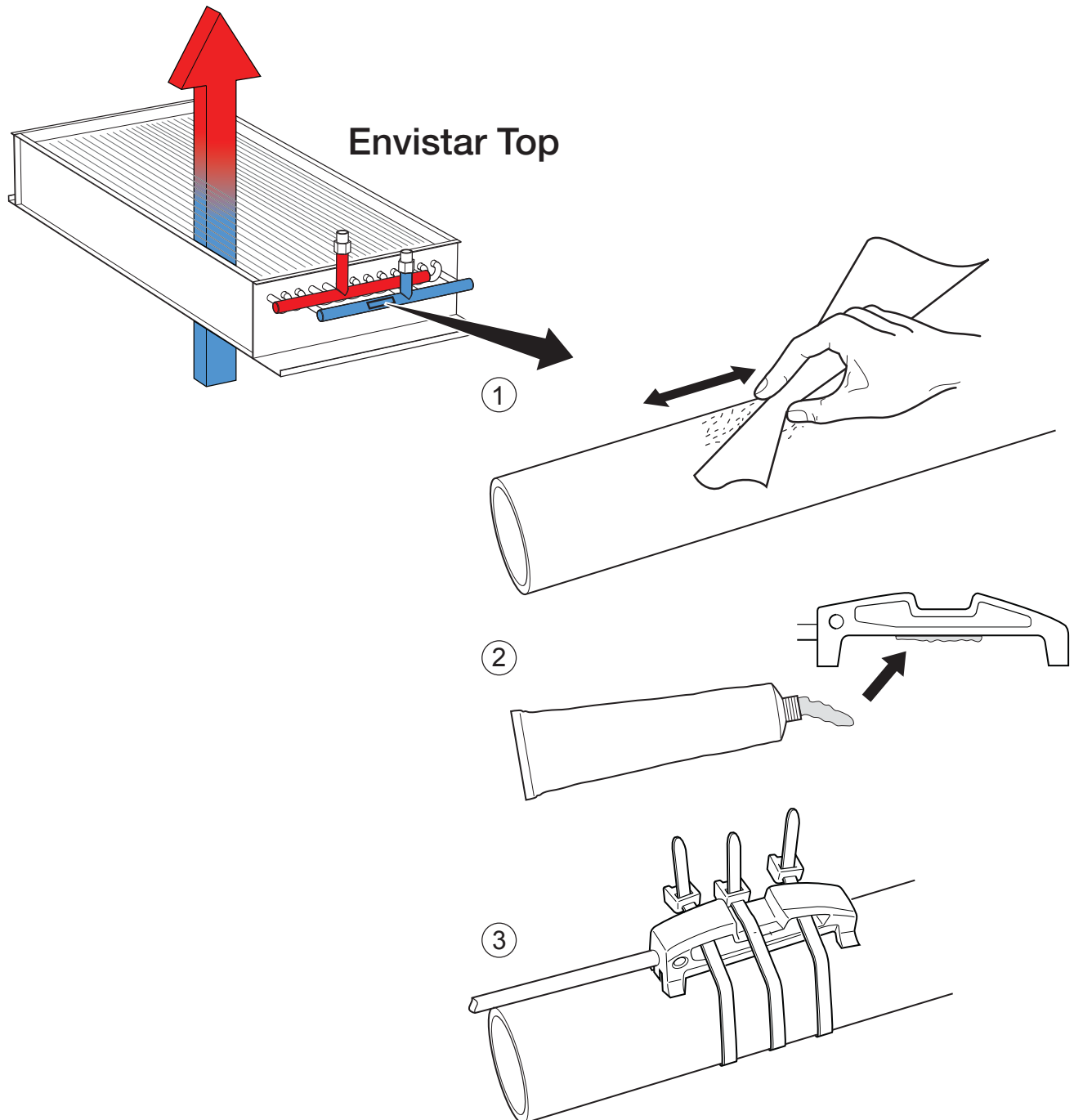


Motströmskoppling

Batteriet ska kopplas **motströms**: framledning varmvatten (IN) mot tilluftsidan, returledning (OUT) mot utelufts- sidan. Anliggningsgivaren ska monteras på kallaste punkten enligt bild.

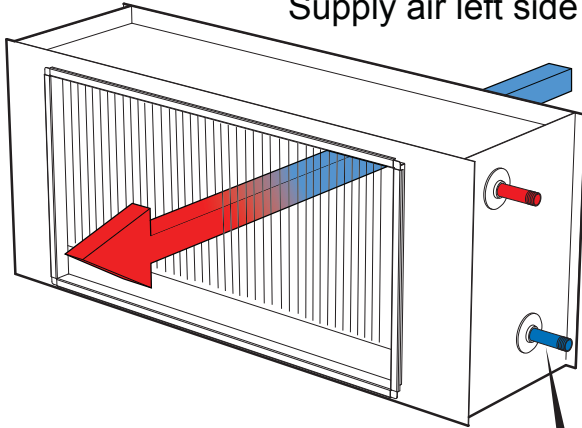
Counterflow operation

The battery should be connected for **counterflow** operation: hot water (IN) connected at leaving air side, return line (OUT) connected at the entering air side. The clamp on detector should be mounted at the coldest spot according to picture.

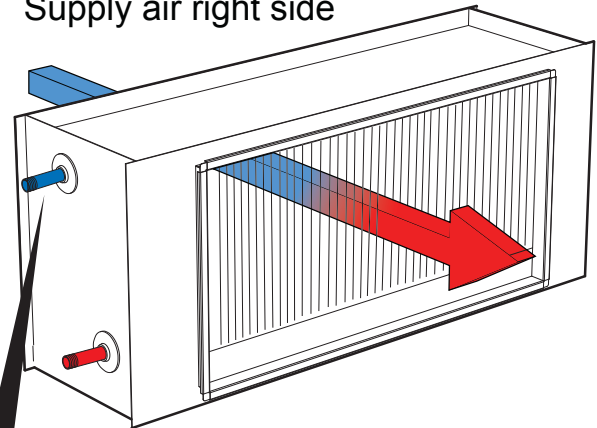


Envistar Compact

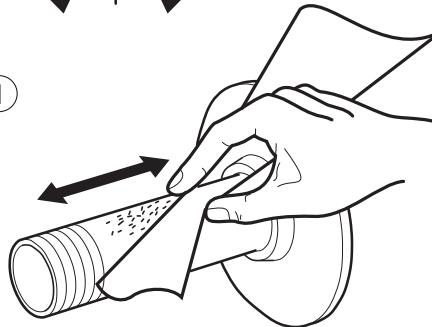
Tilluft vänster
Supply air left side



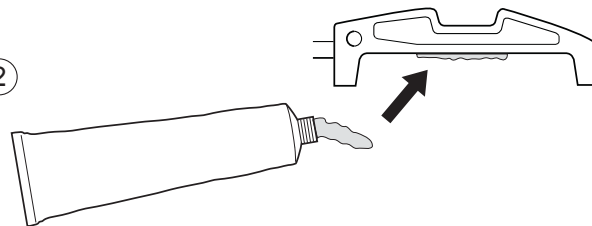
Tilluft höger
Supply air right side



①



②



③

